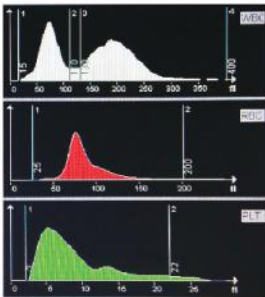


Hemax 330

Hemax 330

Auto Hematology Analyzer with Touch Screen



20 Parameters & 3 Histograms

60 samples per hour

9.8 μ L samples volume

Up to 50,000 sample results stored

Features

- 20 parameters+ 3 Histograms for WBC, RBC and PLT
- 3-part differentiation of WBC
- 3 Counting mode: whole blood ,Pre-diluted Blood,Peripheral Blood
- LCD display with touch screen and Mouse Operation
- Throughput: 60 samples per hour
- Built-in thermal printer, optional external printer
- External AC adapter avoids electronic noises, enhancing accuracy
- Up to 50,000 sample results (including histograms) can be stored
- Multi-language software available on request



Hemax 330

Technical Specifications

Parameters:

WBC, LYM#, MID#, GRA#, LYM%, MID%, GRA%, RBC, HGB, MCHC, MCH, MCV, HCT, RDW-CV, RDW-SD, PLT, MPV, PDW, PCT, P-LCR and Histograms for WBC, RBC and PLT

Throughput: Up to 60 samples per hour

Carryover: WBC/RBC/HGB<0.5%, PLT<1.0%

Accuracy (CV):

- WBC ≤ 2.0%
- RBC ≤ 1.5%
- HGB ≤ 1.5%
- MCV ≤ 0.4%
- PLT ≤ 4%

Principle: Electrical resistance for counting WBC, RBC and PLT

Sample Volume: Whole Blood 9.8μL; Pre-diluted Blood 20μL, Peripheral Blood 9.8μL

Operating Environment: Temperature: 15℃-35℃; Humidity: ≤80%

Alarms:Error messages

Input/Output: RS-232,USB, LAN, keyboard and mouse interface

Printout: Thermal printer, 55mm width paper, various printout formats, external printer optional

Power Requirement: a.c.110V-220V, 50/60Hz

Dimension: 478mm(L)×330mm(W)×395mm(H)

Weight: 23Kg



B&E SCIENTIFIC INC

Add: 804 Thorndale Ave, Bensenville IL 60106
Tel: +1 630 974 5159
Fax: +1 630 974 5160
Email: info@besic.com
Web:www.besic.com

Your Local Distributor is :