

Company Profile

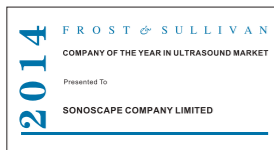
Since its establishment, SonoScape has been committed to providing high quality medical equipment for the healthcare sector. SonoScape specialized in the development and production of diagnostic solutions. Through innovation SonoScape continues to not only improve the efficiency and accuracy of healthcare solutions, but also to increase a sense of comfort for the patient and clinician. Since 2002, the innovative technology of SonoScape has benefited millions of people and we are dedicated to continue providing more effective and accessible healthcare solutions to the world.

Quote from Frost & Sullivan

"The Frost & Sullivan Award for Growth Leadership is presented to the company that has demonstrated excellence in capturing the highest annual compound growth rate for the last 3 years... The sales of ultrasound devices contribute an overwhelming proportion of total revenue, helping the company strengthen its leading position to outperform the competitors in the marketplace. With increasing penetration of mid-to high-end ultrasound devices, SonoScape is expected to see growth potential in the future..."

Company Milestone

- 2002: Company Founded in Shenzhen, China
- 2003: Released SSI-1000: the 1st 15" Portable Color Doppler system in China
- 2004: Released SSI-2000: the 1st PC platform Color Doppler system in China
- 2005: Received the "High Technology Company" award from the PRC government
- 2007: Received "CHINA TOP BRAND" award in the Medical Equipment Industry
- 2007: Released the 1st Real time 4D ultrasound system in China
- 2008: Received "European Entrepreneurial Company 2008" award from FROST & SULLIVAN
- 2008: Received "Flagship Company" award in the Medical Equipment Industry in China
- 2009: Received "Product Quality Leadership Award 2009" from FROST & SULLIVAN
- 2011: Received the Reddot 2011 Product Design Award for S20 in Essen, Germany
- 2013: Received "Ultrasound Market Growth Leadership Award, 2013" from FROST & SULLIVAN
- 2014: Received the iF product design award 2014 for S9 in Munich, Germany
- 2014: Received "Company of the Year in Ultrasound Market, 2014" From FOST & SULLIVAN



ISO 13485

CE 0197

SonoScape

Yizhe Building, Yuquan Road, Shenzhen, 518051, China

Tel: 86-755-26722890 Fax: 86-755-26722850

E-mail:sonoscape@sonoscape.net www.sonoscape.com

SonoScape

S50

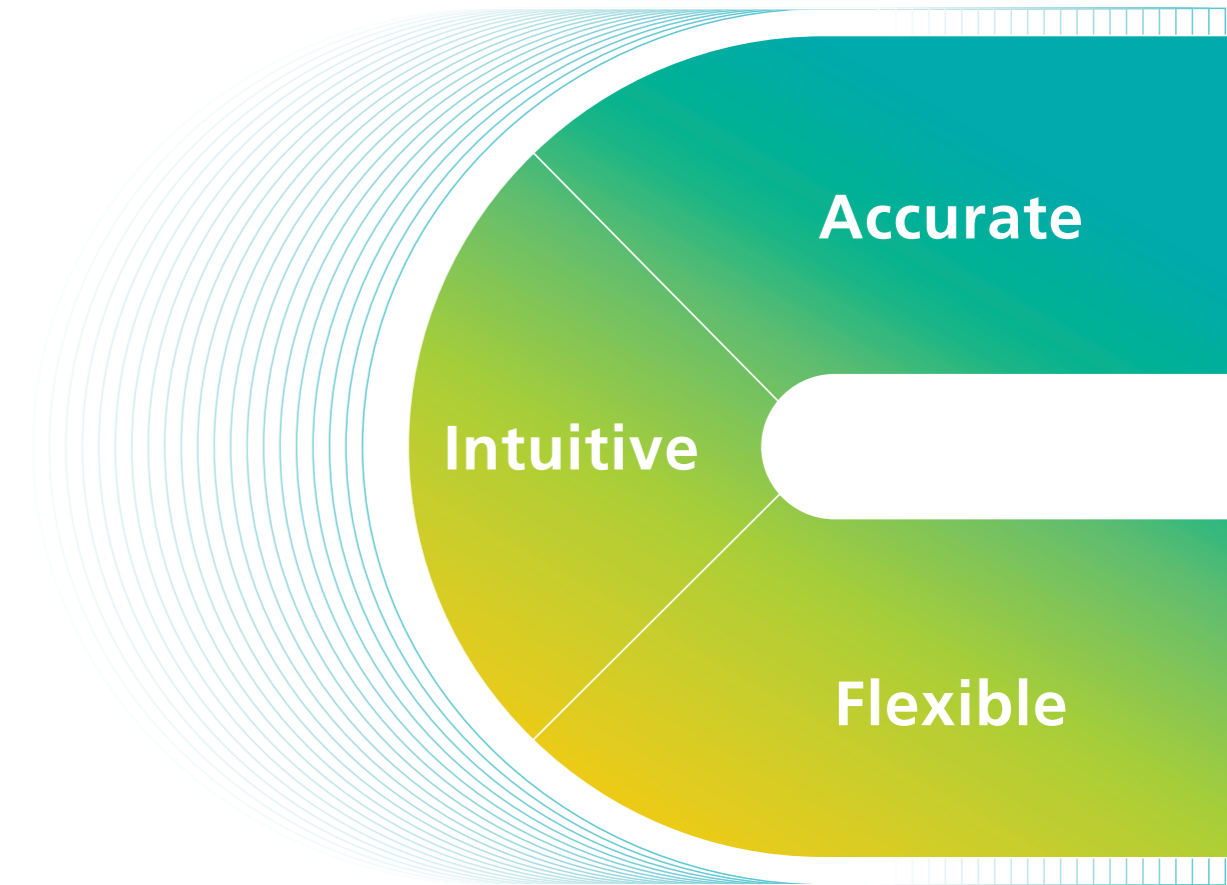


U-S5020151106

Caring for Life through Innovation



Adhering to its great image quality, SonoScape's newly released S50 carries a comprehensive, upgraded platform, to become an epoch-making ultrasound system. It is equipped with powerful single crystal transducers, remarkable 4D functions and intelligent workflow, which perfectly helps to meet a wide variety of general imaging needs. Outfitted with extraordinary software and hardware, S50 is perfectly a balanced design, internally and externally. The quick response touch screen, mode switching and storage operations deliver a new standard with clarity and flexibility.



Improve your confidence

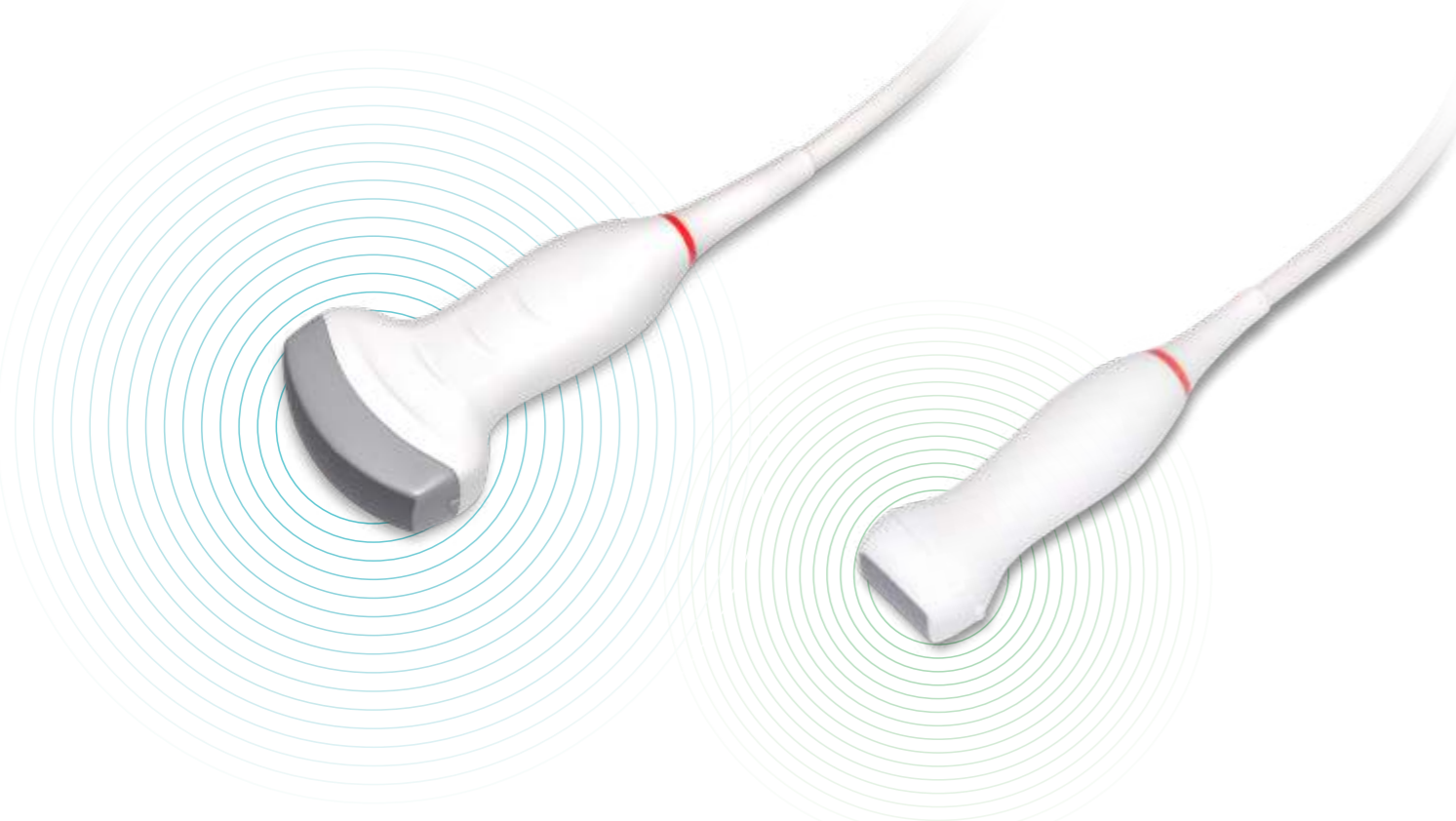
Single crystal: better penetration, higher resolution, greater sensitivity. Extremely clear image performance with unique imaging, optimized technology from SonoScape.

Ease of use

New platform leads to an efficient workflow and provides excellent human-machine interaction. It allows us to quickly respond to the needs of costumers as well as user defined settings.

Fits your needs

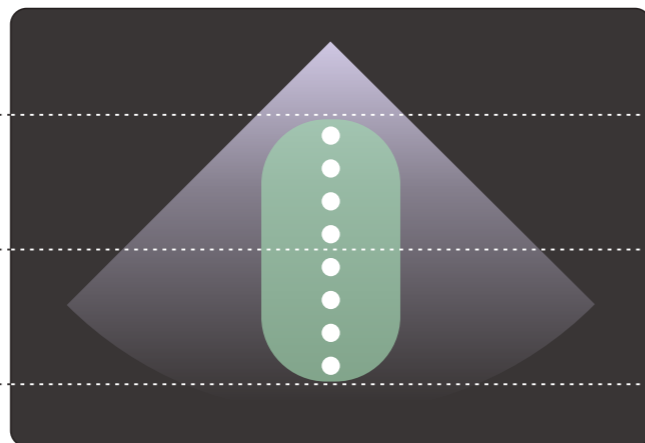
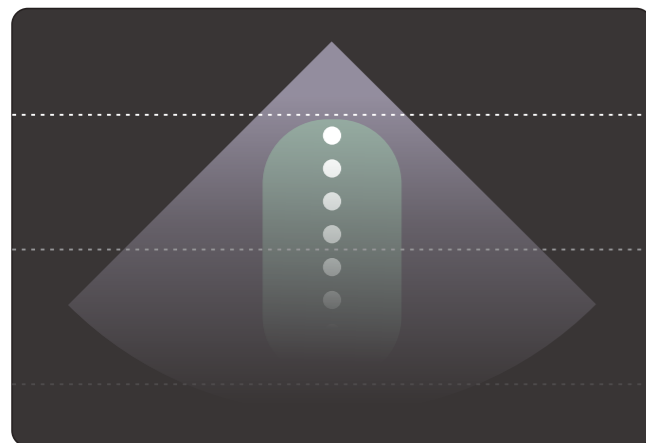
SonoScape S50 provides various imaging software to fit different applications such as cardiology, radiology, OB/GYN, etc. With advanced features including cardiac and 4D packages, S50 can meet the extensive needs of clinical challenges of today and tomorrow.



SonoScape S50 is equipped with a wide band single crystal probe for abdominal and cardiac scanning, which can greatly improve signal to noise ratio, and acquires stunning images with better resolution and richer imaging detail. Compared with a conventional transducer, a single crystal probe has significantly improved acoustic energy conversion capacity, which means the probe has better performance as well as longer working life.

Conventional

Single Crystal



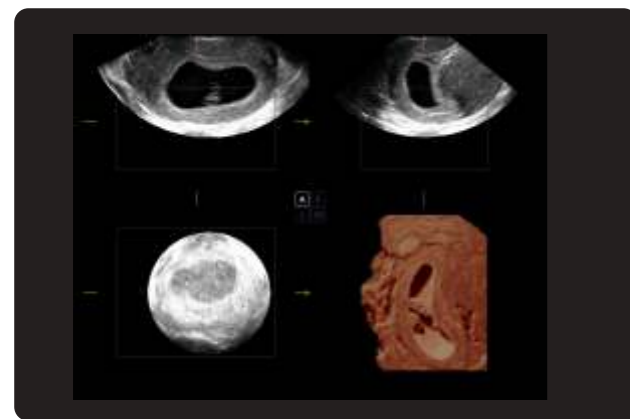
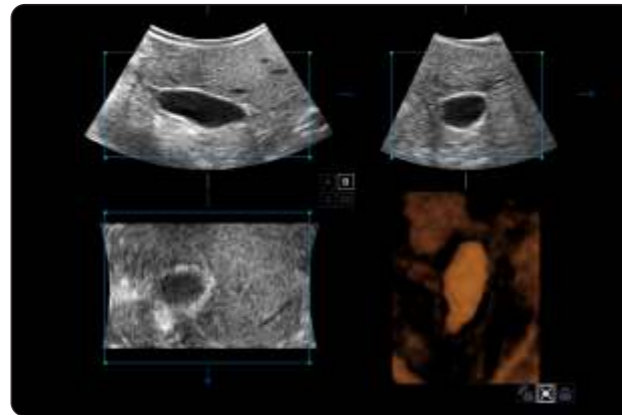
The design of S50 took operational use into consideration, creating a comfortable diagnosing environment. Ergonomic design, excellent man-machine interaction and rapid response, makes S50 as an intelligent scanning assistant for you, bringing improved efficiency and helping to prevent fatigue from multiple examinations.

- 21.5 inch Wide LED Monitor
- Super Responsive Touch Screen
- Flexible Adjusting Control Panel
- Built-in Gel Warmer
- Wireless Wi-Fi Connection

SonoScape S50 is configured with a new imaging engine, which can significantly optimize image performance, especially for 3D/4D imaging with speed and convenience. S-live provides 4D imaging with intelligent rendering, leading to a vivid fetus image. Advanced 4D inversion technology can assist doctors in analyzing anechoic anatomic structures by clearly visualizing the details of desired regions of an unborn child, looking for abnormalities, which can provide more information than conventional ultrasound systems could normally obtain. Outstanding volume performance makes S50 outshine others on volume imaging, and dramatically enhances diagnostic confidence.

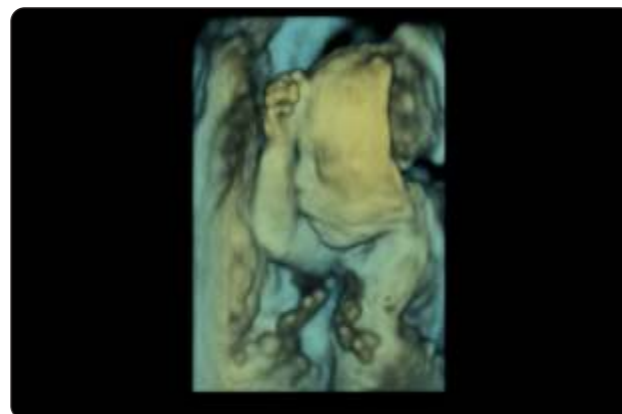
• Inversion 4D

Inversion 4D provides more in-depth evaluation of vascular and cystic structures creating a three-dimensional cast-like volume of the anatomy of interest.



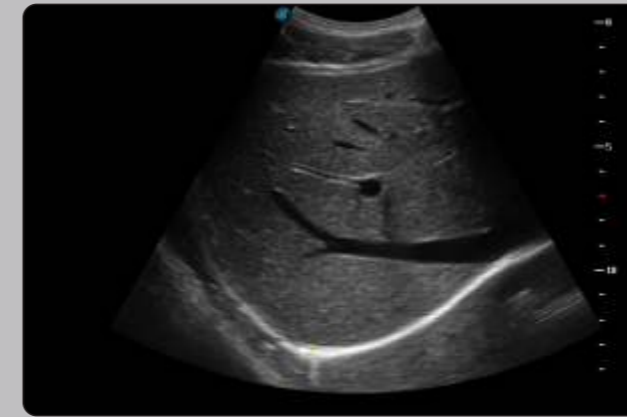
• S-Live

S-Live allows for detailed visualization of subtle anatomical features, thereby enabling intuitive diagnosis on the real-time 3D images and enriching patient communication.

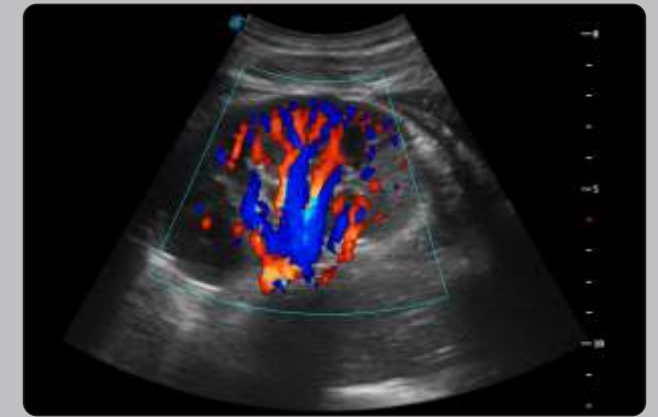


• S-Depth

S-Depth can automatically display the near-far relation from transducer to target, represented by smart designed color coding. It can help doctors to judge the spatial relationship on real-time 3D images.



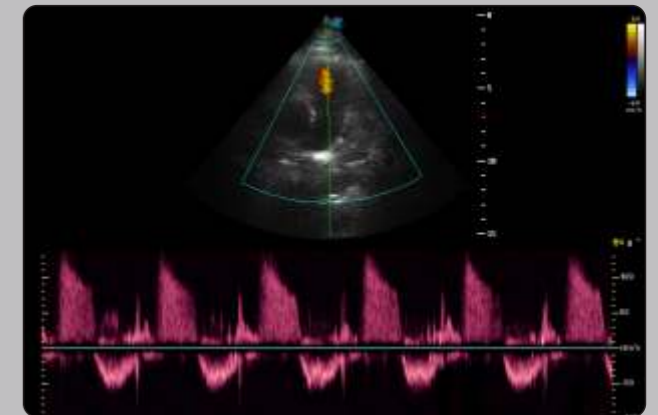
right lobe of liver



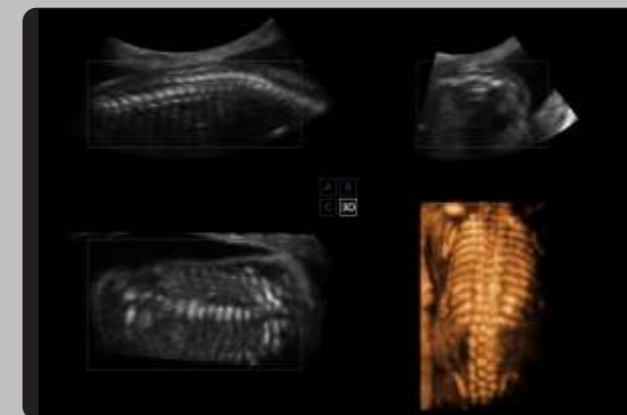
kidney perfusion



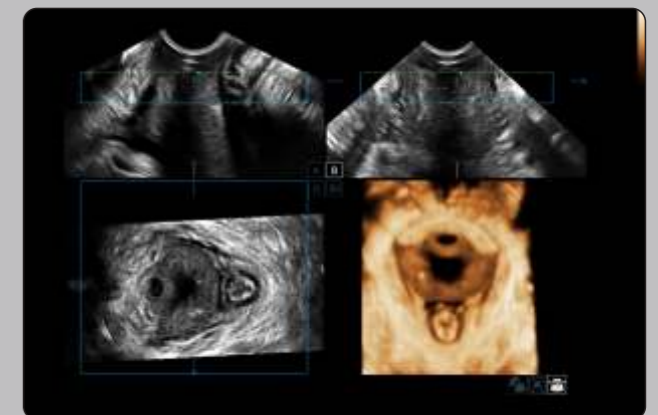
long axis view of LV



pulmonary regurgitation



fetal spine



pelvic floor 4D